

VISCONTI TUNING

GTR AWD CONTROLLER INSTALL GUIDE

INTRODUCTION

Welcome to the Visconti Tuning Install Guide for the KAPS GTR AWD



KIT CONTENTS

- > KAPS AWD Controller Board
- > Serial to USB Adapter

TOOLS REQUIRED FOR INSTALLATION

- > Ratchet with 12 & 14mm socket
- > Small Phillips-Head Screwdriver
- > Razor Blade / Knife

STEP 1 - EXPOSE BOLTS

- Remove 4 plastic bolt covers on corners of your passenger seat



STEP 2 - REMOVE SEAT BOLTS

- Use the 14mm to remove the 4 exposed bolts holding the passenger seat down.



STEP 3 - REMOVE THE PASSENGER SEAT

***Important - Make sure your ignition turned off before preceding! ***

- > Tilt the passenger seat on its side and unplug the 4 connectors
- > Remove the passenger seat from the car



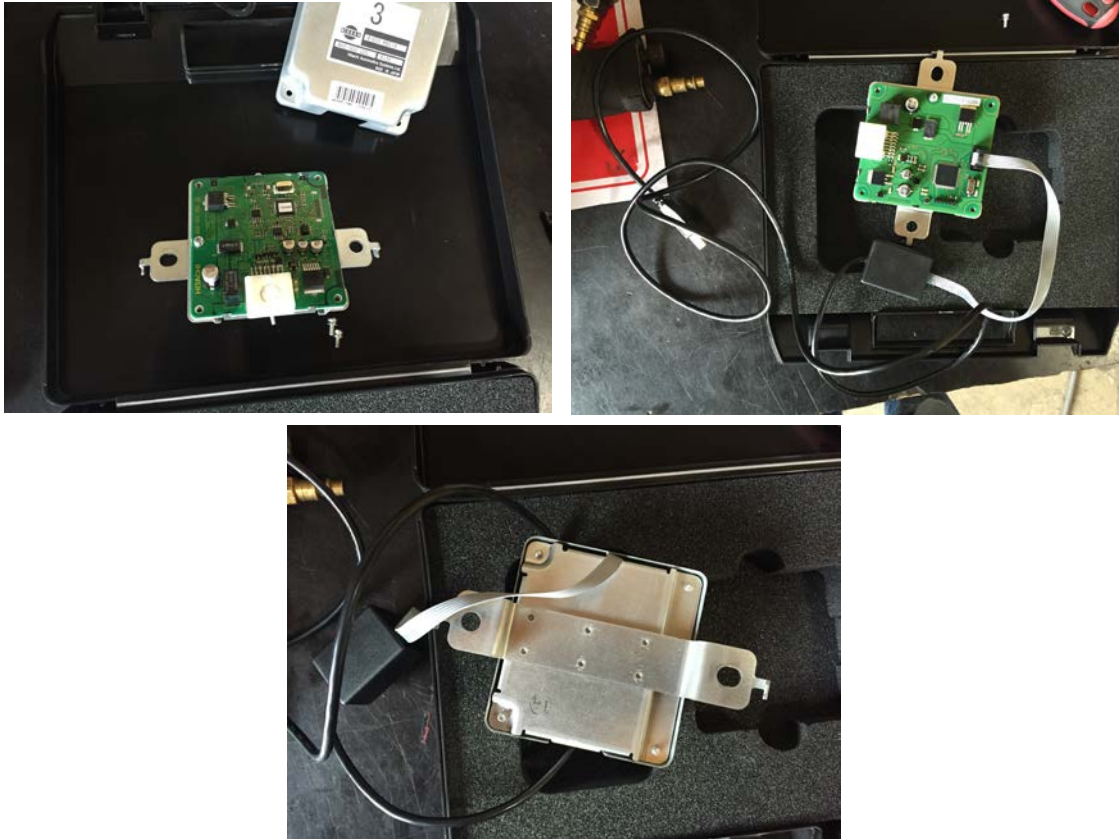
STEP 4 - LOCATE OEM AWD CONTROLLER

- Pull back the carpet to gain access to the Styrofoam that covers the AWD Controller
- Take a razor blade and trim around the outline on the Styrofoam to expose the AWD Controller



STEP 5 - SWAP THE AWD CONTROLLER

- Use the 12mm to remove the two bolts holding the controller to the floor.
- Use the Phillips screw driver to remove the AWD Case and swap out the AWD Controller board



STEP 6 - REINSTALL THE AWD CONTROLL & SEAT

- Reinstall the AWD Controller and passenger seat



HOW THE AWD CONTROLLER WORKS

The KAPS AWD Controller has four switchable maps that can be changed on-the-fly.

Map Switching done by pressing the transmission R-Mode button down TWICE.



After pressing the R-Mode button down TWICE the "Torque Split" gauge up will rapidly blink letting you know which map is currently selected.

When the "Torque Split" gauge is completely filled you are on Map 4.

When the "Torque Split" gauge has only a small amount filled you are on Map 1.



IMPORTANT!

After installing the AWD Controller it is important to make sure you are on the correct map.

Not checking which map you are on after installation could result in the car only being in 2WD.

Controllers Supplied by Visconti Tuning come with 4 different Maps.

MAP 1 - 2WD Burn Out Mode

MAP 2 - Maximum 50% Torque Split

Map 3 - Maximum 70% Torque Split

Map 4 - Maximum 100% Torque Split

It's important to understand that the factory ETS unit and clutch does have limitations.

Installing this AWD Controller will not improve traction if you have a worn out ETS Clutch or tires.

I personally run all my shop and customer cars on Map 4 all the time.

Road Race Customers can see additional gains from custom tuning.

If you have any questions or problems, PLEASE contact us via email

john@vtune.us