

VISCONTI TUNING

UPDATED - 01/01/16

GTR FUEL PUMP HARDWIRE KIT- INSTALL GUIDE

INTRODUCTION

Welcome to the Install Guide for Visconti Tuning's Plug & Play Fuel Pump Hardwire Kit. Your hardwire Kit should contain all of the parts shown in the picture.



KIT CONTENTS

- > Main Harness with relays and fuses
- > Secondary Harness
- > Trunk Harness (New)
- > Zip ties

TOOLS REQUIRED FOR INSTALL

- > Small Flat Head Screw Driver
- > Razor Blade
- > 3/4" drive ratchet
- > 3/4" extension
- > 3/4" 19mm socket
- > 3/4" 10mm socket

Install should take 60-120 min to complete.

STEP 1 - REMOVE PLASTIC COVER FROM ENGINE COMPARTMENT



Move the cover out of the way by taping it up or removing it completely.

STEP 2 - RUN MAIN HARNESS INTO THE CAR



Carefully slice a small slit into the grommet and pass the main harness into the car. Relay side of the harness will stay in the engine compartment.

(AMS COWL Splash Shield Recommended)

STEP 3 - LOCATE HARNESS UNDER DASH (PASSENGER SIDE)



Carefully remove the side panel under the dash on the passenger side of the car to expose the harness you just ran into the car. Carefully pull the harness into the car (Best to have someone helping you feed while you pull)

STEP 4 - RUN THE HARNESS TO THE BACK OF THE CAR



Carefully run the main harness along the door under the rug of the car.

STEP 5 - REMOVE BACK SEAT, SIDE PANEL & TOPHAT



- Pull on the lower back seat lock release to remove the lower back seat.
- Remove bolt holding upper back seat
- Lift upper back seat UP to remove.
- Remove the bolts/clips and remove the interior plastic
- Using a flathead screw driving remove the TOPHAT cover.

STEP 6 - RUN THE TRUNK HARNESS



One end of the *Trunk Harness* plugs into the secondary fuel pump relay which is located on the passenger side rear-quarter panel of the car.

- Remove relay bracket to gain access to the blue secondary pump relay
- Relocate blue relay to *Trunk Harness* (Remove the white plastic spacer below relay)

****Some GTRs are fitted a secondary fuel pump relay with a white bottom that cannot be separated. You'll need to take a pair of wire cutters/dykes and cut the white bottom out. ****



- Plug *Trunk Harness* into OEM Relay Socket & Reinstall relay bracket
- Run *Trunk Harness* to where the *Main Harness* and *Secondary Harness* meet (Back Seat)
- Secure the *Trunk Harness* with zip ties. (*Trunk Harness SHOULD NOT run under the backseat*)

STEP 7 - RUN THE SECONDARY HARNESS



Pull the grommet out top-hat cover and carefully slit a hole big enough to run the two white and black secondary harness connectors through.

STEP 8 - CONNECT THE SECONDARY HARNESS



Connect the secondary harness Grey (5-WAY) connector to the fuel basket.

Connect the secondary harness Black (5-WAY) connector to the cars Grey (5-WAY) connector.

Connect the secondary harness Brown (2-WAY) connector to the fuel basket.

Factory Grey (2-WAY) Connector does NOT plug into anything

STEP 9 - CONNECT MAIN HARNESS GROUND + MAIN HARNESS TO SECONDARY



Connect the Main Harness ground wire to the back seatbelt bolt.
Connect the two Main Harness connectors to the Secondary Harness.

BESURE TO SIDE THE RED TAB LOCK ON BOTH CONNECTORS

Carefully tuck the harness away

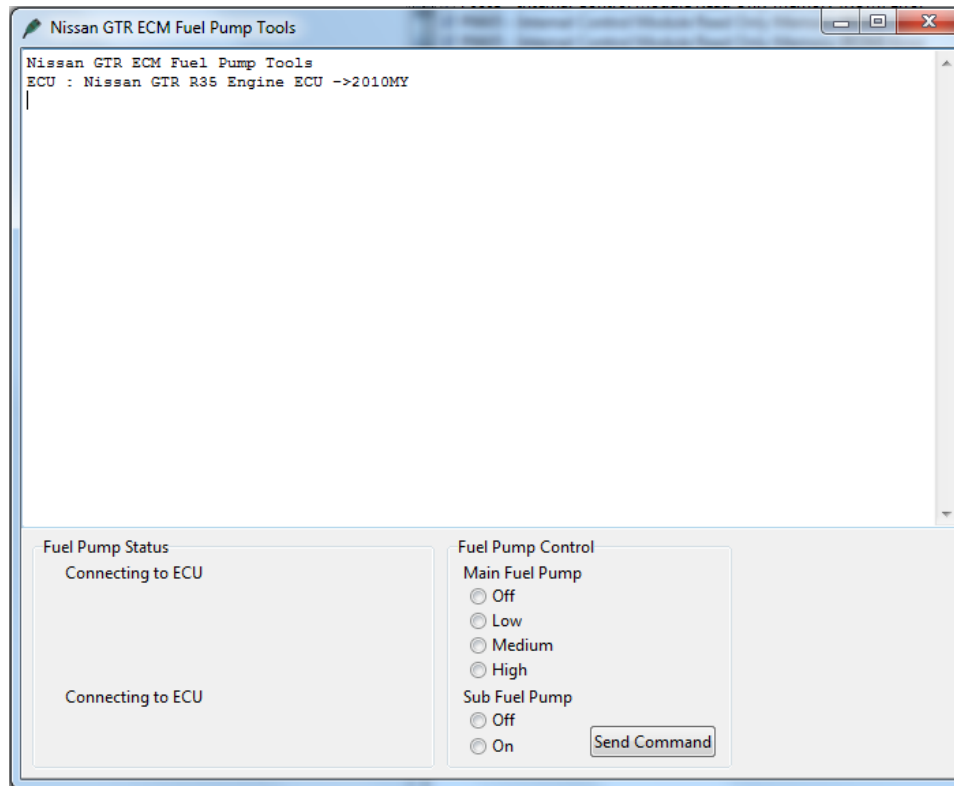
STEP 10 - WHAT THE BACKSEAT SHOULD LOOK LIKE AFTER INSTALL



STEP 11 - CONNECT MAIN HARNESS TO BATTERY

The last thing you'll want to do before testing the fuel pumps is connect the power and ground ring terminals from the main harness to the battery. Carefully tuck the relays alongside the battery. That's it!

STEP 12 - TEST FUEL PUMPS



With a Nissan Consult 3 or EcuTek ProECU Kit test both fuel pumps.

You should be able to turn on the primary pumps LOW, MEDIUM & HIGH SPEEDS.

When you turn on the secondary fuel pump both pumps should be running at FULL VOLTAGE/SPEED

If for some reason your fuel pumps do not operate like this then please go over your install.

Here's the list of DTCs your tuner will need to turn off when this kit is installed.

P0627 - Fuel Pump "A" Control Circuit/Open

P0629 - Fuel Pump "A" Control Circuit/High

P062A - Fuel Pump "A" Control Circuit Range/Performance