

# INSTALLING ECUTEK PROECU SOFTWARE ON YOUR WINDOWS LAPTOP

## A foreword on MacBooks:

You can use a MacBook to run ProECU but you will need to be running a *stand-alone* version of Windows. A stand-alone version is different from an emulated version. There are several OSX apps available that will emulate Windows inside OSX, like Parallels, VMWare Fusion and Virtual Box. These are NOT viable options even though they may appear to work initially. Without getting too technical, the problem lies in these applications also emulating USB ports inside the emulated version of Windows.

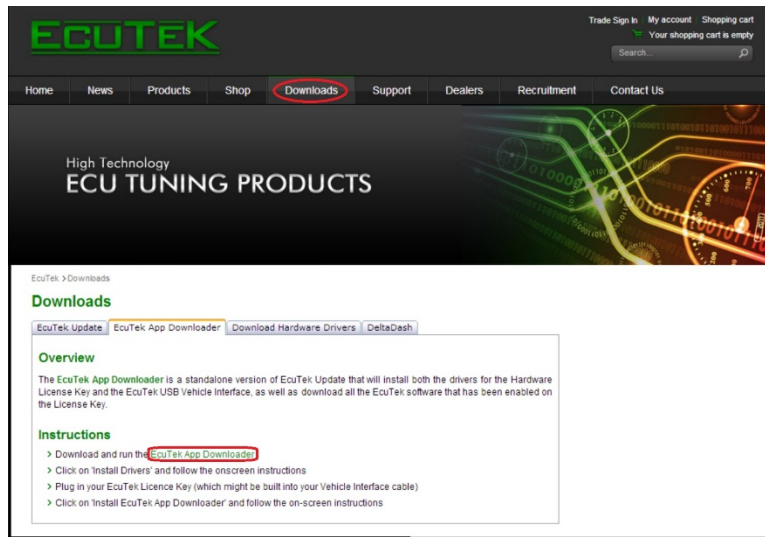
EcuTek's software requires the USB dongle key to be plugged in at all times to run its software. When working with emulated USB ports, there is the potential for conflicts to arise during critical stages of the flash and as we'll discuss in more detail later on, it's very important that there are no interruptions while your computer is exchanging information with your car's ECU.

To run ProECU with a MacBook, you *must* use OSX's Bootcamp application. Just like with the emulation software mentioned, you will need either an image (.iso) of Windows or a physical CD/DVD to install from. More information can be found on [Apple's website](#) or [by clicking here to download the Bootcamp Manual](#). From this point forward, we will only offer support to PC users or Bootcamp users.

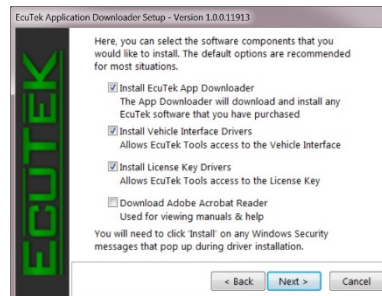
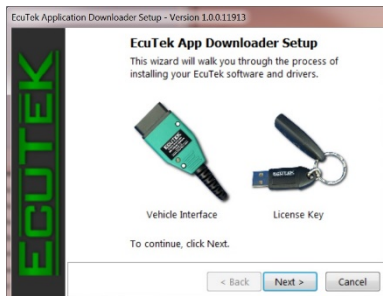


**Please Note: DO NOT plug either the USB Dongle or OBDII USB into your computer until drivers are installed!**

1. The first step we'll need to take to begin this process is to install EcuTek's ProECU Software on your laptop. Their software can be downloaded by visiting [www.EcuTek.com](http://www.EcuTek.com) and clicking on the *Downloads* tab at the top of the page. From there, simply follow the directions on the website and download the "EcuTek App Downloader."



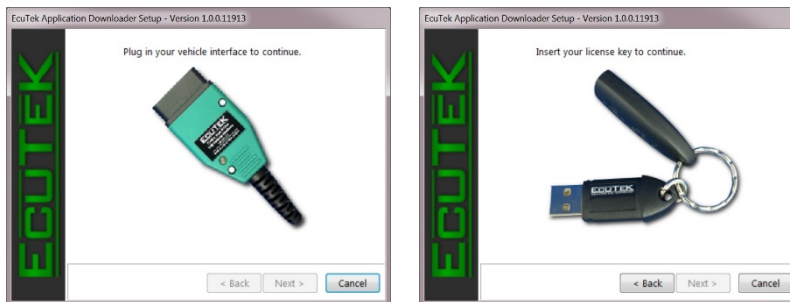
2. When App Downloader is finished, double-click on it to begin the installation process. You'll be met with the following introduction screens, which you simply need to click "Next" through.



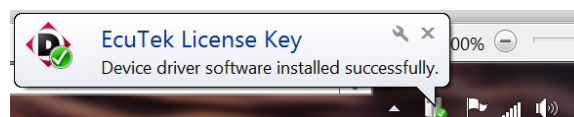
3. At this stage, you will be installing the drivers for both the USB Dongle Key and your OBDII-to-USB Cable. Again, for the smoothest installation process possible, **PLEASE do not** plug either device into your computer before the proper drivers are installed! All options on the Software Components screen should be checked by default, so click Next and Windows will ask you to verify the driver installation with the following window:



4. It is **highly recommended** that you check the "Always trust software from EcuTek International" box, which will prevent this window from occurring again and also from windows hanging on the next driver install. After installing the drivers for both devices you'll be using to run the ProECU Software with, you'll be asked to plug each one in separately beginning with the OBDII cable. Luckily the installer uses pictures to show when to plug in each device, as shown below.



5. After the drivers for both devices are correctly installed, you should see a confirmation bubble pop up from the taskbar, as seen in the image below. This confirms that both devices were recognized and installed correctly with the proper drivers.



6. Leave both devices connected as you proceed through the rest of the installation. Next EcuTek's App Downloader software will update all components of the ProECU software with the latest patches and revisions. It is very important that you allow all updates to be downloaded and installed!

